

CSA Z1010

Management of Work in Extreme Conditions

A new National Standard for Canadian Workplaces



**CSA
Group**

Management of work in extreme conditions



Why a National Standard on Extreme Conditions?



- No Existing Canadian Standard
- Canada is a large Country with many remote worksites
- Harsh weather conditions in many locations
- Need to maintain infrastructure
- Need identified in CSA Z1000
- For reference in many OHS Standards



For Whom is the Standard Designed?



- Employers
- Site Managers
- Health & Safety Professionals
- Emergency Responders
- Work site planners and designers
- Transportation Companies
- Communication Specialists



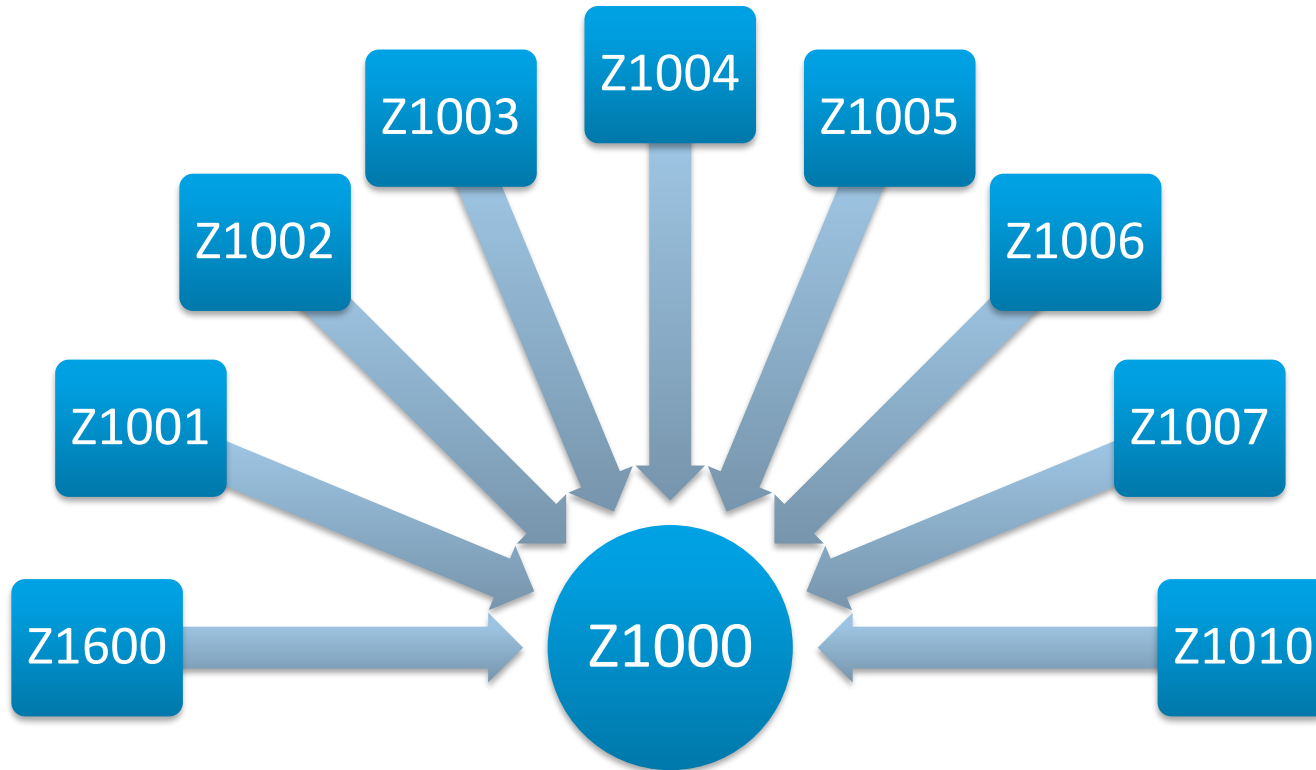
CSA Consensus Process



- Technical Committee
 - stakeholder volunteers
 - fair representation
- Survey of needs
- Review of existing resources materials
- Substantive agreement
- Public Review
- Final Vote by Members



CSA Management System Standards



Plan-Do-Check-Act Model



What are Extreme Conditions?

- Extreme heat
- Elevated humidity levels
- Extreme cold
- High wind
- Extreme precipitation
- Severe weather
- High altitude
- High/low atmospheric pressure
- Diminished visibility



Subjects Addressed by CSA Z1010

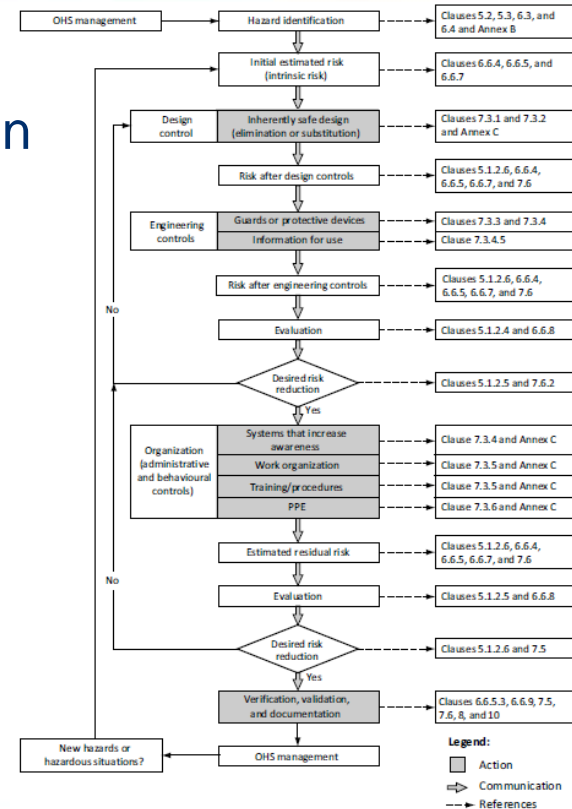


1. Management Systems for Work in Extreme Conditions
2. Risk Assessment and Risk Control
3. Program Implementation and Work Planning
4. Health and Safety Monitoring
5. Emergency Procedures
6. Management System and Program Reviews



Risk-based Management

1. Evaluate the work site
2. Consider transportation and communication
3. Know the range of work activities
4. Know the environmental conditions
5. Analyze hazards and relative risk
6. Apply controls
7. Plan for contingencies
8. Evaluate residual risk
9. Monitor and reassess



10.1

The physical condition of worker(s) (as verified by a qualified physician) needs to be considered.



10.2.1

The organization shall monitor or observe:

- (a) the physical signs and symptoms of deteriorating health among worker(s) exposed to extreme conditions; and
- (b) the psychological signs and symptoms (behaviour) of deteriorating mental faculty among worker(s) exposed to extreme conditions (ref. CSA Z1003).

Annex A — Guidance on hazard identification

Annex B — Planning for work in extreme conditions

Annex C — Example extreme conditions plan

Annex D — Example health screening form

Annex E — Sample “mayday” procedure

Various Applications



Does your OHS Management System address all types of jobs under all possible conditions?

Do you have contingency plans for situations where conditions change suddenly?

Are there plans for reacting to unplanned events?

Have these plans been tested under a variety of conditions?

Have you planned for
appropriate work/rest cycles?

Do you monitor the physical and psychological condition of workers?

- CSA Z45001 – OHS Management
 - **Z45001 Application Handbook**
- Z1002 Risk Assessment and Risk Control
- Z1003 Psychological Health and Safety
- Z1004 Workplace Ergonomics
- Z1006 Work in Confined Spaces
- **Z1008 Management of Impairment in the Workplace**
- Z1600 Emergency Preparedness

Questions



Thank you



For more information please contact:

Dave Shanahan, Project Manager

dave.shanahan@csagroup.org

416-747-2586

CSA Z1010-18

is available at CSA's Online Store

<http://shop.csa.ca>